

Actuator LA30

LA30 is a powerful actuator yet small enough to fit most applications. The actuator can be supplied with options such as built-in potentiometer for servo operation or an extra powerful motor for increased speed and strength (S-motor). In addition to industrial and agricultural applications, the actuator is also ideal for positioning satellite dishes.



Features and options:

- 12/24V DC permanent magnet motor
- Max. thrust up to 6000 N (LA30LK)
- Stainless steel piston rod
- Elegant and compact construction with small installation dimensions
- Protection Class: IPX0/66
- Colour: Black
- Speed max. 65 mm/s (LA30 S-motor with 12 mm pitch)
- Low noise level
- Steel construction for all bearing parts
- Acme thread spindle for optimum efficiency
- Extra powerful motor (S-motor)
- L-motor for system actuator
- IP66 (by ordering LA30 with plastic housing)
- Double-acting brake - increased self-locking ability (LA30 with 6 or 9 mm pitch + LA30 S-motor with 6 or 9 mm pitch and LA30L) which ensures that all these types are fully self-locking
- Potentiometer for positioning the actuator 0-1 K ohm, 0-5 K ohm or 0-10 K ohm
- Reed switch (only LA30 L-motor versions): 8 pulses pr. spindle revolution
- Mechanical spline function. Safety feature by using the mechanical spline, the actuator can only push
- Safety nut (only in push)
- Terminal cover (only LA30 L-motor versions)
- Ball screw (K) (only LA30 L-motor versions)
- Ball screw and safety nut (KAS) (only LA30 L-motor versions)
- Ball screw, safety nut and splines (KSM) (only LA30 L-motor versions)

Usage:

- Duty cycle: 10%, 2 minutes continuous use followed by 18 minutes not in use
- Ambient temperature +5° to +40°C
- Storage temperature -40° to +70°C
- Compatible with control boxes CB8, CB12,
- Should LA30 be used with a non LINAK control unit, please ask the nearest LINAK representative for further details

Technical specifications:

New type	Spindle pitch (mm)	Thrust max. Push (N)	Thrust max. Pull (N)	*Self-lock max. With/without brake (N)	Typical speed 0/full load (mm/s)	Stroke length (mm)								Typical amp. at full load 12V 24V	
						50	100	150	200P	250	300	350	400P	14	7
307xx0-4xxxx0/5xx	12	1000	1000	1000/0	48/24	50	100	150	200P	250	300	350	400P	14	7
303xx0-4xxxx0/5xx	9	1500	1500	1500/400	42/20	50	100	150P	200	250	300P	350	400	14	7
302xx0-4xxxx0/5xx	6	2000	2000	2000/500	18.5/14	50	100P	150	200P	250	300	350	400P	14	7
301xx0-xxxxx0/5xx	3	3000	3000	3000/3000	16/9	50P	100P	150	200P	250	300	350	400	14	6.4
307xx0-4xxxx1/2xx	12	1000	1000	1000/0	65/35	50	100	150	200P	250	300	350	400P	20	10
303xx0-4xxxx1/2xx	9	1800	1800	1800/0	52/25	50	100	150P	200	250	300P	350	400	20	10
302xx0-4xxxx2xx	6	2000	2000	2000/500	34/20.3	50	100P	150	200P	250	300	350	400P	18	-
302xx0-4xxxx1xx	6	2400	2400	2400/500	34/20.3	50	100P	150	200P	250	300	350	400P		9
301xx0-xxxxx1/2xx	3	3500	3000	3500/3500	17/9.5	50P	100P	150	200P	250	300	350	400	18	9
307xx0-4xxxx4xx	12	1000	1000	1000/0	26/20	50	100	150	200P	250	300	350	400P	-	2.5
303xx0-4xxxx4xx	9	2000	2000	2000/0	20/13	50	100	150P	200	250	300P	350	400	-	4.4
302xx0-4xxxx4xx	6	3000	3000	3000/2000	13.8/7	50	100P	150	200P	250	300	350	400P	-	4
301xx0-xxxxx4xx	3	4000	3000	4000/4000	7/4.5	50P	100P	150	200P	250	300	350	400	-	5.5
30Kxx0-0xxxx4xx	4	6000	3000	6000/n/a	8.7/5.5	-	-	150	200	250	300	350	400	-	4.7
30Kxx0-1xxxx4xx	4	6000	3000	6000/n/a	8.7/5.5	-	-	150	200	250	300	350	400	-	4.7
30Kxx0-3xxxx4xx	4	6000	3000	6000/n/a	8.7/5.5	-	100	150	200	250	300	350	400	-	4.7

The above measurements are made with the actuators connected to a stable power supply, LA30 L-motor versions with a CB12.

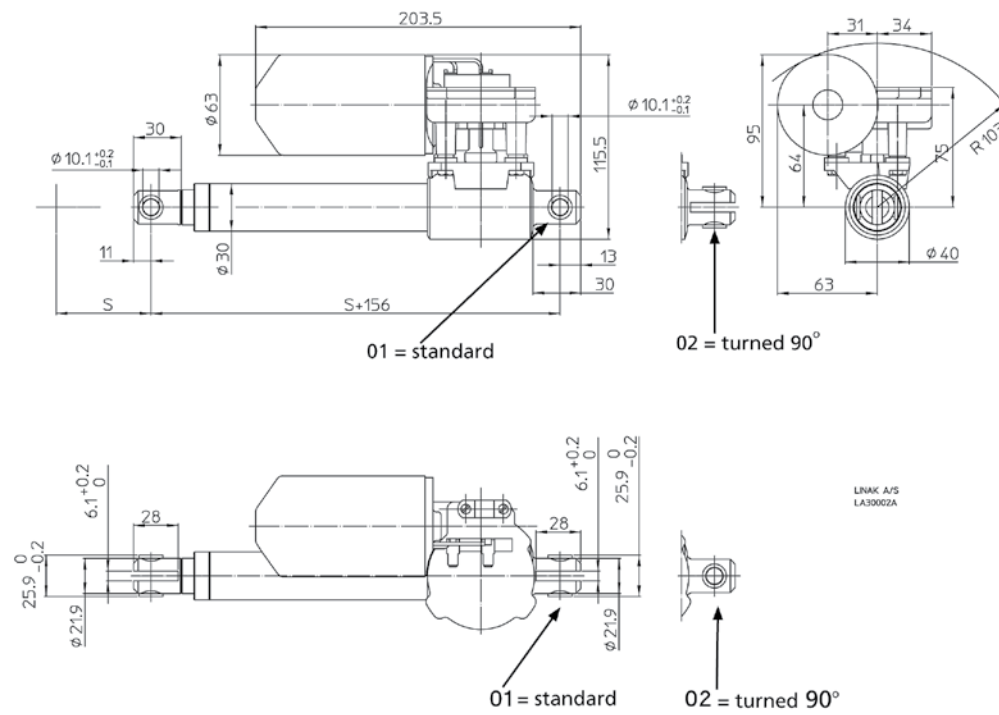
S = Strong motor; L = Slow motor; K = Ball screw; KAS = Ball screw, safety nut; KSM = Ball screw, safety nut, spline.

LA30

Ordering example:

30	1	1	0	0	-	1	0	2	5	0	0	0

Dimensions:



Installation dimension:

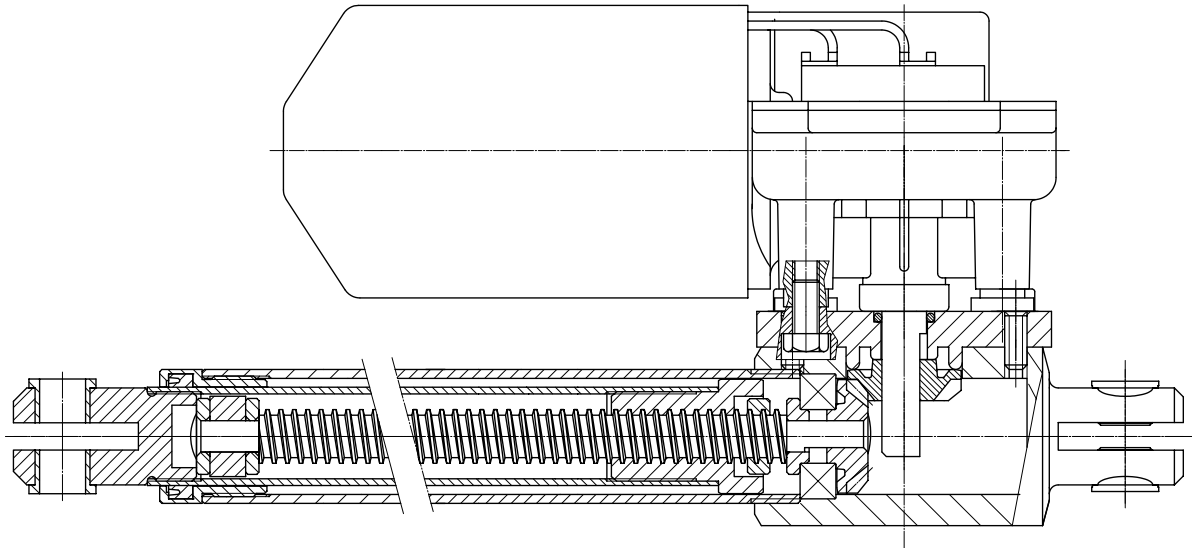
LA30 L-motor + LA30 + LA30 S-motor with 3 or 6 mm pitch	S + 156 mm
LA30 with spline + LA30 S-motor with 9 mm pitch	S + 167 mm
LA30 with brake + LA30 S-motor with 3 or 6 mm pitch with brake	S + 189 mm
LA30 with ball screw and L-motor / LA30 ball screw and safety nut	S + 194 mm
LA30 L-motor with brake + LA30 S-motor 9 or 12 mm pitch with brake	S + 199 mm
LA30 L-motor with ball screw, safety nut and spline	S + 251 mm

It is possible to order a LA30 with the protection class IP66. This option requires a plastic housing. See drawings below.

Dimensions:

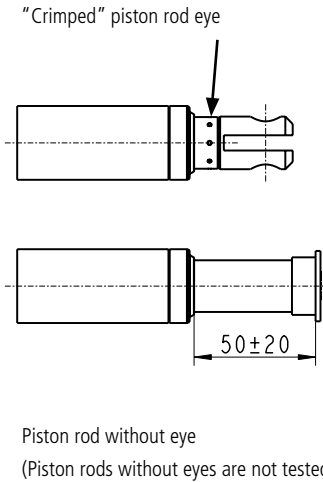
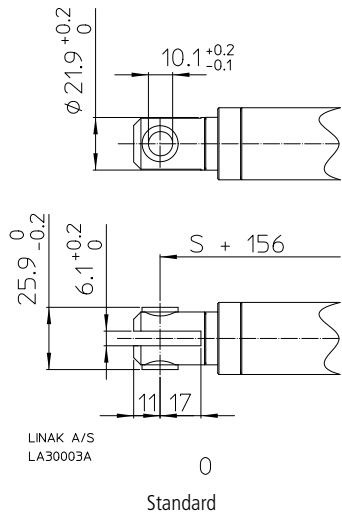


LA30 Standard:



Drawing no.: LA30SNIT001B

Piston Rod eyes:



Terms of use

The user is responsible for determining the suitability of LINAK products for specific application. LINAK takes great care in providing accurate and up-to-date information on its products.

However, due to continuous development in order to improve its products, LINAK products are subject to frequent modifications and changes without prior notice. Therefore, LINAK cannot guarantee the correct and actual status of said information on its products.

While LINAK uses its best efforts to fulfil orders, LINAK cannot, for the same reasons as mentioned above, guarantee the availability of any particular product. Therefore, LINAK reserves the right to discontinue the sale of any product displayed on its website or listed in its catalogues or other written material drawn up by LINAK.

All sales are subject to the Standard Terms of Sale and Delivery for LINAK. For a copy hereof, please contact LINAK.